

W H O L E S A L E D I S T R I B U T O R



DIVISION 7

© 2007 D.M. FIGLEY, INC.

SEALANT & CAULKING COMPOUNDS

SEALANT & CAULKING COMPOUNDS

BOSTIK CHEM-CALK 300 One-Component; Butyl Rubber	A-1	DOW CORNING® General Purpose One-Part Silicone Sealant	A-8	SCHNEE MOREHEAD S-M 5522 Acryl-R® Acrylic Sealant	A-14
BOSTIK® CHEM-CALK® 915 One-Component, Polyurethane Sealant, Gun Grade	A-1	DOW CORNING® Glazing Sealant	A-8	SCHNEE MOREHEAD S-M 7100 Permathane® Polyurethane Sealant	A-14
BOSTIK® CHEM-CALK® 916 1-Component, Polyurethane Sealant, Gun Grade	A-1	DOW CORNING® Tub, Tile & Ceramic Sealant	A-8	SCHNEE MOREHEAD S-M 8500 Acryl-R® Elastomeric Sealant	A-14
BOSTIK® 1100 FAST SET Urethane Adhesive/Sealant	A-2	DOW CORNING 123 Silicone Seal	A-8	SHEETROCK® BRAND Acoustical Sealant	A-14
BOSTIK® CHEM-CALK® 2000 One-Component, Premium Grade, Construction Sealant	A-2	DOW CORNING® 1200 & 1205 Primers for Construction & Glazing Sealants	A-9	Sikadur® Combiflex Strip and Seal System	A-15
BOSTIK® CHEM-CALK® 2020 One-Component, Advanced Urethane Sealant	A-2	DOW CORNING® P5200 Adhesion Promoter	A-9	Sikaflex®-1a Elastomeric Sealant/Adhesive	A-15
BOSTIK® CHEM-CALK PAINTERS' CAULK Siliconized Acrylic Latex	A-3	DOW CORNING® PRIMER C Construction Sealant Primer	A-9	Sikaflex®-1CSL 1-Part Self-Leveling, Polyurethane Urethane Sealant	A-15
DOW CORNING® CWS Silicone Joint Sealant	A-3	DOW CORNING® PRIMER P Construction Sealant Primer	A-9	Sikaflex®-15LM Low-Modulus Elastomeric Sealant	A-16
DOW CORNING® 732 Multi-Purpose Sealant	A-3	DOW CORNING® Cleaner and Surface Prep Solvent	A-10	Sikaflex®-11FC Elastomeric Sealant/Adhesive	A-16
DOW CORNING® 790 Silicone Building Sealant	A-4	EMSEAL COLORSEAL™	A-10	Sikaflex® AT-Connection, The Universal Construction Sealant For Window, Door Perimeter & Connection Joints	A-16
DOW CORNING® 791 Silicone Perimeter Sealant	A-4	FOMO PRODUCTS, INC. Handi-Foam® One-Component Foam	A-11	Sikaflex® 2c NS/SL Polyurethane Elastomeric Sealant	A-17
DOW CORNING® 795 Glazing and Weatherproofing Sealant	A-5	FOMO PRODUCTS, INC. Handi-Foam® Two-Component Foam	A-11	Sikaflex® 2c NS/TG Traffic Grade	A-17
DOW CORNING® 756 SMS Building Sealant	A-5	GUNTHER Ultra/Bond™ Mirror Mastic	A-11	Sikaflex®-201 Industrial Polyurethane Sealant	A-17
DOW CORNING® 786 Mildew Resistant Sealant	A-5	PAC/POLY ELASTO-THANE 230 Polyurethane Sealant	A-12	Sikaflex®-221 Industrial Polyurethane Adhesive Sealant	A-18
DOW CORNING® 888 Silicone Joint Sealant	A-6	PAC/POLY POLYUREA 85A Joint Filler	A-12	Sikaflex®-252 Polyurethane Elastic Adhesive	A-18
DOW CORNING® 890-SL Self-Leveling Silicone Joint Sealant for Asphalt	A-6	PAC/POLY ELASTO-SEAL 200 Jet Fuel-Jet Blast Resistant Joint Sealant	A-12	Sikaflex® Primers 260/205, 429/202 449/203 and 35	A-18
DOW CORNING® 902 RCS Joint Sealant	A-6	PAC/POLY ELASTO-SEAL 227 Polysulfide Joint Sealant	A-12	Sika-Primer 206 G+P	A-19
DOW CORNING® 983 Silicone Glazing & Curtainwall Adhesive/Sealant	A-6	PAC/POLY ELASTO-THANE 227 Polyurethane Joint Sealant	A-13	Sika-Primer 210T	A-19
DOW CORNING® 995 Silicone Structural Adhesive	A-7	PAC/POLY ELASTO-THANE 5639 Joint Sealant	A-13	SONOLASTIC® 150 WITH VLM TECHNOLOGY Very Low-Modulus, Fast-Curing, Non-Sag, Elastomeric, Silyl-Terminated Polyether Sealant For EIFS	A-19
DOW CORNING® 999-A Building & Glazing Sealant	A-7	SCHNEE MOREHEAD S-M 5430 Acryl-R® Non-Skinning, Non-Sag SSR Sealant	A-13	X.J.S® Expansion Joint System for Bridge and Parking Decks	A-19
DOW CORNING® 1199 Silicone Glazing Sealant	A-7	SCHNEE MOREHEAD S-M 5504/5505 Narrow-Joint Sealants	A-13		

BOSTIK CHEM-CALK 300 One-Component; Butyl Rubber

- 1-COMPONENT BUTYL RUBBER
- GUN GRADE MATERIAL

PRODUCT DESCRIPTION:

Chem-Calk® 300 sealant is a one-component architectural grade butyl rubber sealant. It has the consistency of toothpaste. Its physical properties will remain stable over time and in severe weather conditions.

Chem-Calk® 300 is designed for caulking and sealing joints where little or no joint movement can be expected, such as in perimeter joints of window frames and door jambs, bedding thresholds, secondary seals in glazing, and where a seal is required against neoprene gaskets.

Chem-Calk® 300 butyl rubber sealant may be factory-applied to seal shop finished products or field-applied to seal erected building components in both new and remedial applications.

TECHNICAL DATA

CHEM-CALK® 300 SEALANT MEETS OR EXCEEDS THE TEST REQUIREMENTS OF FEDERAL SPECIFICATION TT-S-001657 (COMNBS) AND ASTM C-1085.

PACKAGING:

10.3 fl. oz. (304 ml) cartridges, 24 to a case.

COLORS:

White, Gray, Bronze

BOSTIK® CHEM-CALK® 915 One-Component, Polyurethane Sealant, Gun Grade

- EASY GUNNING
- BONDS TO COMMON BUILDING MATERIALS
- QUICKER SKIN & CURE TIMES

PRODUCT DESCRIPTION:

Bostik® Chem-Calk® 915 sealant is a one-component, construction grade, smooth polyurethane sealant capable of dynamic joint movement totaling 50% of original joint geometry ($\pm 25\%$). The sealant cures to a tough, flexible rubber when exposed to moisture present in the atmosphere. Chem-Calk® 915 polyurethane sealant has a consistency like toothpaste; its physical properties will remain relatively stable over time and in varying weather conditions.

BASIC USES:

It is designed for sealing expansion and control joints in pre-cast concrete panels, for sealing various roofing and siding applications and for sealing perimeters of doors, windows, and other wall penetrations. The sealant cures to form a durable, flexible bond with most building materials in any combination including stone, masonry, ceramic, marble, wood, steel, aluminum, fiber cement board and many other synthetic materials.

TECHNICAL DATA

ASTM C920, TYPE S, GRADE NS, CLASS 25, USE NT, A AND M. US FEDERAL SPECIFICATION TT-S 00230C (COMB-NBS) FOR ONE-COMPONENT SEALANTS AS CLASS A, NON-SAG.

PACKAGING:

10.3 fl.oz. cartridge, 24 to a case.

COLORS:

White, Stone, Bronze, Tan, Black, Limestone, Med. Bronze, Almond, Aluminum Stone, Hunter Green

BOSTIK® CHEM-CALK® 916 1-Component, Polyurethane Sealant, Gun Grade

- TEXTURED FINISH
- SUPERIOR ADHESION
- FASTER SKIN TIME

PRODUCT DESCRIPTION AND BASIC USE:

Bostik® Chem-Calk® 916 sealant is a one-component, construction grade, textured urethane sealant capable of dynamic joint movement totaling 50% of original joint geometry ($\pm 25\%$). The sealant cures to a tough, flexible rubber when exposed to moisture present in the atmosphere. Chem-Calk® 916 polyurethane sealant has a consistency like toothpaste, its physical properties will remain relatively stable over time and in varying weather conditions. Its physical properties are relatively unchanged over a wide temperature range, -20°F to 150°F (-29°C to 66°C). Where smooth appearance is needed, please use Bostik® Chem-Calk® 915.

Designed for sealing expansion and control joints and for sealing perimeters of doors and windows. In many cases, no primer is required.

Sealant cures to form a durable, flexible bond with most building materials including masonry, ceramic, wood, steel, aluminum, and many synthetic materials.

APPLICABLE STANDARDS

ASTM C920, TYPE S, GRADE NS, CLASS 25, USE NT, A AND M. US FEDERAL SPECIFICATION TT-S 00230C (COMB-NBS) FOR ONE-COMPONENT SEALANTS AS CLASS A, NON-SAG.

CANADIAN SPECIFICATION CAN/CGSB 19.13-M87.

CARB AND SCAQMD COMPLIANT.

PACKAGING:

10.3-fl.oz. cartridge, 24 to a case.

COLORS:

White, Stone, Bronze, Tan, Black, Limestone, Med. Bronze, Almond, Buff, Aluminum Stone, Milgard Tan.

BOSTIK® 1100 FAST SET Urethane Adhesive/ Sealant

- 1-PART POLYURETHANE
- FAST SETTING FOR BONDING
- INDUSTRIAL APPLICATIONS

PRODUCT DESCRIPTION:

Bostik® 1100 Fast Set is a one part urethane sealant that cures by reaction with atmospheric moisture to form a tough, flexible seal. It has tenacious adhesion to woods, metals, FRP and most plastics. Bostik® 1100 Fast Set can be used in bonding, beading and sealing applications.

Typical Applications include sealing and bonding applications in general industry, HVAC, truck trailer, horse trailer, RV, emergency vehicle, bus, rail-car, and container construction. Bostik® 1100FS should not be used for glazing, for plastic materials with high plasticizer content or corrosion/crack sensitive plastics.

TECHNICAL DATA:

BOSTIK® 1100FS MEETS REQUIREMENTS OF: FEDERAL SPECIFICATION TT-S-00230C (COMNBS) FOR ONE-COMPONENT SEALANTS AS CLASS A, NON-SAG ASTM C920-79 STANDARD SPECIFICATIONS FOR ELASTOMERIC JOINT SEALANTS AS TYPE S, GRADE NS, CLASS 25, USE NT, A AND M

PACKAGING:

10.3 fl. oz. (304 ml) cartridges, 24 to a case.

COLORS:

Black, Gray, White

BOSTIK® CHEM-CALK® 2000 One-Component, Premium Grade, Construction Sealant

- 1-COMPONENT HIGH PERFORMANCE
- VOC-COMPLIANT, ENVIRONMENTALLY FRIENDLY
- NON-GASSING
- COLOR FAST, NON-YELLOWING

PRODUCT DESCRIPTION:

Bostik® Chem-Calk® 2000 (Smooth or Textured) Ultimate Formula Sealant is a one component, high performance, low VOC construction sealant—making it the ideal sealant when working in environmentally sensitive areas. Both formulas exhibit superior sealing capabilities and have been specially designed to seal between many common building materials including vinyl and fiber cement board (FCB) siding, most metals and wood where dynamic movement can be expected. Chem-Calk® 2000 Ultimate Formula is color fast and non-gassing allowing it to be used in aesthetically critical areas for interior or exterior applications. Chem-Calk® 2000 Ultimate Formula Sealant can be painted with a good quality acrylic latex paint. Note: Bostik Findley DOES NOT recommend the use of oil-based or alkyd paints on any Chem-Calk 2000 projects.

BASIC USES:

It seals dynamic movement joints between vinyl siding, fiber cement board (FCB), aluminum, most metals and common building materials. Use for interior and exterior bonds—transitional seal between building materials. Use for perimeter seals for windows, doors and other wall penetrations on vinyl, fiber cement board (FCB) and other siding materials. It can be used for metal building construction

TECHNICAL DATA

**ASTM C-920, USE NT, TYPE S, GRADE NS, CLASS 25,
US FED SPECIFICATION TT-S-00230, TYPE II, CLASS A,
CAN/CGSG-19.13-M87**

PACKAGING:

Cartridge, 10.3 oz., 24 per case.
Sausage, 20 oz., 12 per case.

COLORS:

White, Almond, Limestone, Tan, Bronze, Stone



BOSTIK® CHEM-CALK® 2020 One-Component, Advanced Urethane Sealant

- 1-PART POLYURETHANE
- SEAL BETWEEN VARIOUS VINYL SIDING
- CURES TO FORM DURABLE BOND
- NON-YELLOWING, LOW ODOR

PRODUCT DESCRIPTION:

Chem-Calk 2020 is a one-component, moisture cure, advanced urethane sealant that offers superior adhesion to vinyl siding, vinyl trim board, and a variety of dissimilar surfaces. It is suitable for most building materials including stone, masonry, wood, aluminum and a variety of other metals. It has a non-sag consistency suitable for most vertical applications.

TECHNICAL DATA

**ASTM C920, TYPE S, GRADE NS, CLASS 50,
USE NT, A AND M. US FEDERAL SPECIFICATION
TT-S 00230C, TYPE II, CLASS A**

COLORS:

White in stock. Other colors special order.

PACKAGING:

10.3 oz. cartridge, 24 per case.

BOSTIK® CHEM-CALK PAINTERS' CAULK Siliconized Acrylic Latex

- 1-COMPONENT
- GUN GRADE
- PAINTABLE
- WHITE COLOR

PRODUCT DESCRIPTION AND BASIC USES:

Bostik Chem-Calk Painters' Caulk is a siliconized acrylic latex caulking compound designed for interior and limited exterior applications prior to painting. Typical applications would be interior perimeter sealing of window and door frame, sheet rock, and ceiling to wall joints.

Its low odor and quick skinning allows it to be used indoors. It can be used to fill voids between dissimilar building materials such as pipes, bathroom and kitchen fixtures. Chem-Calk Painters' Caulk can be painted with any quality acrylic latex or oil based paint after one hour of cure time. Lastly, Chem-Calk Painters' Caulk formulation offers mold and mildew resistance.

PACKAGING:

10.3 fl. oz. cartridge. 24 cartridge/case.

COLOR:

White.



Nobody does windows like we do.

We offer a full line of silicone sealants and adhesives from Dow Corning that will help your buildings stand the test of time.

- *Dow Corning*® 795 Silicone Building Sealant, a one-part, structural adhesive/sealant for in-shop and field glazing, as well as curtainwall assembly.
- *Dow Corning*® 983 Silicone Glazing and Curtainwall Adhesive Sealant, a high-modulus adhesive/sealant for structural applications such as factory glazing and curtainwall production.
- *Dow Corning*® 995 Silicone Structural Adhesive, a one-component, neutral-cure, medium modulus elastomeric adhesive with excellent unprimed adhesion to glass, reflective glass, anodized aluminum, granite, and most paints.
- *Dow Corning*® 999-A Silicone Building & Glazing Sealant, a high-modulus, one-part, acetoxyl, architectural grade silicone sealant for conventional glazing of glass and plastic, curtainwall sealing, solar panels, and replacement glazing.
- *Trade Mat*® Glazing Sealant, for window glazing, skylight installation, weatherstripping, and gasket repair.

If you're looking for sealants and adhesives that can do windows and a whole lot more, call us.

"Dow Corning" and "Trade Mat" are registered trademarks of Dow Corning Corporation. © 1996 Dow Corning Corporation. All rights reserved.

DOW CORNING

DOW CORNING® CWS Silicone Joint Sealant

- HIGH PERFORMANCE
- MEDIUM-MODULUS
- ONE-PART

PRODUCT DESCRIPTION AND BASIC USES:

DOW CORNING® Contractors Weatherproofing Sealant is primerless to most common porous and nonporous building substrates, including concrete, masonry, precast, EIFS, aluminum and painted aluminum. It is for sealing dynamically moving joints such as: expansion and control joints, concrete panel joints, tilt-up panel joints, curtainwall joints, and perimeter caulking.

It is a high performance sealant. DOW CORNING® Contractors Weatherproofing Sealant is a one-part, medium modulus, silicone sealant. It is easily gunnable in all weather conditions from -20 to 120 degrees F.

Note: It is the user's responsibility to check the adhesion of the cured sealant on typical test joints at the project site before and during application.

PACKAGING:

10.3 oz. cartridges, 12 per case.
20-oz. sausage packs, 16 per case.
2-gallon pails.

COLOR:

20 standard colors for 2-gallon pails.
14 standard colors for 10.3 and 20 oz. containers.

DOW CORNING® 732 Multi-Purpose Sealant

- 1-PART SILICONE RUBBER
- NON-FLOWABLE
- GOOD RESISTANCE TO WEATHERING
- INDUSTRIAL USE SILICONE

PRODUCT DESCRIPTION AND BASIC USES:

DOW CORNING® 732 Multi-Purpose Sealant is a paste-like, one-component silicone RTV designed for a wide variety of industrial sealant and adhesive applications.

It cures at room temperature by reaction with moisture in the air to produce a durable, flexible silicone rubber.

Specific features include: Non-flowable, good resistance to weathering, broad temperature range of performance, adheres to a variety of surfaces, is 100% silicone and meets the requirements of many specifications.

DOW CORNING® 732 is designed for a number of diverse sealing and bonding applications, such as adhering auto and appliance trim, bonding gaskets, attaching brackets, sealing windows in oven doors, sealing trailers, truck cabs and duct work. There are many industrial uses for DOW CORNING® 732.

PACKAGING:

Available in 10.1 ounce cartridges and 4.5 gallon containers.

COLOR:

Clear and white.

DOW CORNING® 790 Silicone Building Sealant

- 100% SILICONE, 1-PART NEUTRAL CURE SYSTEM
- OUTSTANDING PERFORMANCE IN HIGH MOVEMENT JOINTS
- PLUS 100% MINUS 50% JOINT MOVEMENT
- EXCELLENT ADHESION – WITH NO PRIMER IN MANY CASES
- FIRE RESISTANT
- EIFS SPECIFIED

PRODUCT DESCRIPTION AND BASIC USES:

DOW CORNING® 790 Silicone Building Sealant is a one-part silicone that cures in the presence of atmospheric moisture to produce a durable, fire-resistant, flexible and ultra-low modulus silicone rubber building joint seal.

This sealant provides excellent performance, even in joints that experience extreme movement.

DOW CORNING® 790 is particularly effective for sealing expansion and control joints, precast concrete panel joints, curtainwall joints, mullion joints and many other construction joints.

The sealant forms a durable, flexible, watertight bond with most building materials in any combination: stone, masonry, ceramics, granite, wood, steel aluminum and plastics. Several manufacturers of Exterior Insulation Finish Systems (EIFS) specify the use of DOW CORNING® 790 for new and remedial applications.

DOW CORNING® 790 is USDA approved in six colors for sealing non-food contact areas in USDA regulated facilities.

DOW CORNING® 790 passes a UL Fire Resistance test in an exterior joint configuration sealing system without a steel cover plate. The material also stands up to a high-pressure water force without a protective cover plate.

TECHNICAL DATA: DOW CORNING® 790 EXCEEDS THE DURABILITY REQUIREMENTS OF: ASTM SPECIFICATION C-920, TYPE S, GRADE NS, CLASS 25, USE T, NT, M, G, A AND O. FEDERAL SPECIFICATION TT-S-001543A FOR SILICONE BUILDING SEALANTS. FEDERAL SPECIFICATION TT-S-00230C FOR ONE COMPONENT BUILDING SEALANT. FIRE TESTS OF BUILDING CONSTRUCTION AND MATERIAL, UL263 (ASTM 119). CANADIAN SPECIFICATION CAN2-19.13-M82.

PACKAGING:

Available in 10.3 ounce standard cartridges, 12 cartridges to the case, 20 ounce Unipacs, 16 to the case, 2 gallon pails and 4.5 gallon pails are also available for bulk use.

COLOR:

11 standard colors: black, precast white, gray, natural stone, bronze, adobe tan, blue spruce, rustic brick, sandstone, charcoal and dusty rose. Custom colors are available upon request.



DOW CORNING® 791 Silicone Perimeter Sealant

- 100% SILICONE, 1-PART NEUTRAL CURE SYSTEM
- ±50% JOINT MOVEMENT
- LONG TOOLING TIME
- EXCELLENT ADHESION – NO PRIMER IN MOST CASES
- EXTREMELY TOUGH, TEAR RESISTANT

PRODUCT DESCRIPTION AND BASIC USES:

DOW CORNING® 791 silicone perimeter sealant is a one-part, medium-modulus, elastomeric sealant designed for general weathersealing. It is a silicone that cures to a flexible and durable silicone rubber building joint seal that can accommodate ±50% movement in a properly designed joint. The product is designed for weathersealing. Special features are: long tooling time, primerless adhesion to most window frames, including KYNAR™ paints and anodized aluminum. It cures to an extremely tough, tear-resistant, elastomeric rubber with non-corrosive by-products.

TECHNICAL DATA: DOW CORNING® 791 MEETS OR EXCEEDS THE TEST REQUIREMENTS OF: FEDERAL SPECIFICATION TT-S-001543A (COM-NBS) CLASS A FOR SILICONE BUILDING SEALANTS. FEDERAL SPECIFICATION TT-S-00230C (COM-NBS) CLASS A FOR ONE-COMPONENT BUILDING SEALANTS. ASTM SPECIFICATION: C920, TYPE S, GRADE NS, CLASS 25, USE NT, M, G, A AND O.

DOW CORNING® 791 silicone perimeter sealant is particularly effective for sealing expansion and control joints. Other typical uses include precast concrete panel joints, curtainwall joints, mullion joints and perimeter seals around window frames. It may also be used for end dams and internal seals.

The sealant forms durable, flexible, watertight bonds with most building materials in any combination: stone, masonry, ceramics, granite, wood, steel, aluminum and plastics. In most cases no prime coat is required. The product is intended to be field-applied to seal erected building components in both new and remedial applications.



PACKAGING:

Available in 10.3 ounce standard cartridges, 12 cartridges to the case, 20 ounce Unipacs, 16 to the case, 2 gallon pails are also available for bulk use.

COLOR:

Black, white, gray, limestone and bronze.

DOW CORNING® 795 Glazing and Weatherproofing Sealant

- 100% SILICONE, 1-PART NEUTRAL CURE SYSTEM
- APPROVED FOR STRUCTURAL GLAZING
- ±50% JOINT MOVEMENT
- EXCELLENT ADHESION
- FIRE RESISTANT

PRODUCT DESCRIPTION AND BASIC USES:

DOW CORNING® 795 silicone building sealant is a one-part silicone that cures to a durable and flexible silicone rubber building joint seal that can accommodate ±50% joint movement. The sealant demonstrates: unprimed adhesion to most common construction materials; it is strong enough for structural glazing with sufficient movement capability for most weatherproofing applications; excellent fire-resistant properties; a long cure time for easy tooling; a low odor while curing; and excellent weathering, durability and recovery after extension and compression.

TECHNICAL DATA

DOW CORNING® 795 MEETS OR EXCEEDS THE TEST REQUIREMENTS OF: FEDERAL SPECIFICATION TT-S-001543A (COM-NBS) CLASS A FOR SILICONE BUILDING SEALANTS. FEDERAL SPECIFICATION TT-S-00230C (COM-NBS) CLASS A FOR ONE-COMPONENT BUILDING SEALANTS. ASTM SPECIFICATION C-920, TYPE S, GRADE NS, CLASS 25, USE NT, MG, AND A. GSA (C.I.D.) NO. A-A-1556 TYPE S, GRADE NS, CLASS 40, USE NT, M, G, A, AND O. FIRE TESTS OF BUILDING CONSTRUCTION AND MATERIAL, UL263 (ASTM E119). CANADIAN SPECIFICATION CAN2-19.13-M82.

DOW CORNING® 795 silicone building sealant is designed for: structural and non-structural glazing of glass, metal and plastic, adhering stiffeners to building panels, weatherproofing applications, including perimeter sealing of doors and windows.

DOW CORNING® 795 silicone building sealant may be factory applied to seal shop-finished products or field applied to seal erected building components in both new and remedial applications. The sealant forms durable, flexible, water-tight bonds with most building materials in any combination: stone, masonry, ceramics, granite, wood, steel, aluminum and plastics. In most cases no prime coat is required.

DOW CORNING® 795 passes a UL Fire Resistance test in an exterior joint configuration sealing system without a steel cover plate. The material also stands up to a high-pressure water force without a protective cover plate.

PACKAGING:

Available in 10.3 ounce standard cartridges, 12 cartridges to the case. It is also packaged in 20 ounce E-Z PAK™ foil Unipacs, packaged 16 to the case and 2 and 4.5 gallon bulk pails.

COLOR:

11 standard colors: black, white, gray, limestone, bronze, sandstone, adobe tan, dusty rose, rustic brick, blue spruce and charcoal. Custom colors are also available.

DOW CORNING® 756 SMS Building Sealant

- IMPROVED AESTHETIC PERFORMANCE
- 2-PART SILICONE
- LONG POT LIFE
- PAINTABLE

PRODUCT DESCRIPTION AND BASIC USES:

DOW CORNING® 756 Silicone Building Sealant H.P. is a medium modulus elastomeric sealant designed for weatherproofing sensitive porous stone and metal panel substrates where aesthetic considerations are important. It is a two-part silicone formulation that requires mixing prior to use. It cures to a flexible, durable, weather-resistant seal with the ability to form strong bonds with most building materials.

It has unprimed adhesion to most glass, metal, brick, fluoropolymer painted substrates and granite substrates. It has primed adhesion to other common substrates such as aluminum, marble, limestone and concrete. It will not contribute to long term residue rundown on metal panels and reflective glass or staining on porous substrates. It is effective for sealing expansion and control joints, metal panel joints, curtainwall joints, joints between natural stone, and perimeter seals around window frames. It is for new and remedial construction of exterior buildings.

PACKAGING:

Available in 1.5 gallon kit.

COLOR:

White, limestone, gray, bronze, black and custom colors.

DOW CORNING® 786 Mildew Resistant Sealant

- 100% SILICONE RUBBER
- FUNGICIDAL SEALANT
- FOR HOT & HUMID ENVIRONMENTS
- EXCELLENT ADHESION TO NON-POROUS SURFACES
- WILL NOT SHRINK OR DRY OUT

PRODUCT DESCRIPTION AND BASIC USES:

DOW CORNING® 786 Mildew-Resistant Silicone Sealant is a single component, fungicidal, silicone rubber sealant designed to seal non-porous surfaces around ceramic tile, cultured marble, showers, tubs, sinks, and plumbing fixtures where the condition of high humidity and temperature extremes exist.

DOW CORNING® 786 Mildew-Resistant Silicone Sealant remains flexible and will not shrink, crack, crumble or dry out. The sealant resists staining, spotting and color changes; resists moisture, hot cooking oils and free steam.

TECHNICAL DATA: FEDERAL SPECIFICATION TT-S-001543, CLASS A; TT-S-00230, CLASS A; ASTM C 920 WITH THE EXCEPTION OF GLASS ADHESION THROUGH UV EXPOSURE; MIL-A-46106A, TYPE 1; CANADIAN SPECIFICATION CGSB 19-GP-22M; FDA REGULATION NO. 21 CFR 177.2600; AND NATIONAL SANITATION FOUNDATION RATING C2.

PACKAGING:

Available in 10.3 ounce standard size cartridges, 12 per case.

COLOR:

White and translucent white.

DOW CORNING® 888 Silicone Joint Sealant

- FAST CURE
- 1-PART, LOW-MODULUS
- NO PRIMER REQUIRED
- MADE FOR HIGHWAY CONCRETE

PRODUCT DESCRIPTION AND BASIC USES:

DOW CORNING® 888 Silicone Joint Sealant is a one-part, cold applied silicone material that readily extrudes over a wide temperature range and cures to produce a durable, flexible, low-modulus silicone rubber joint seal for use in Portland Cement Concrete (PCC) applications.

Because of its low-modulus characteristics and good extension/compression recovery DOW CORNING® 888 Silicone Joint Sealant gives outstanding performance in highway, airport, bridge and parking deck joints in which extreme movement occurs.

DOW CORNING® 888 has unprimed adhesion, high movement capability and seals irregular surfaces. It has a fast cure and long-life reliability.

**TECHNICAL DATA: FEDERAL SPECIFICATIONS
TT-S-0015434, CLASS A AND TT-S-00230C,
CLASS A AND AASHTO-AGC-ARTBA.**

PACKAGING:

29 fluid ounce cartridges, 4.5 gallon pails.

COLOR:

Gray.

DOW CORNING® 890-SL Self-Leveling Silicone Joint Sealant for Asphalt

- 1-PART, LOW-MODULUS
- NO TOOLING REQUIRED
- MADE FOR ASPHALT TO CONCRETE
- NO PRIMER REQUIRED

PRODUCT DESCRIPTION AND BASIC USES:

DOW CORNING® 890-SL Self-Leveling Silicone Joint Sealant for Asphalt is a one-part, cold-applied, easy-to-use, silicone material that cures to an **ultra-low-modulus** silicone rubber upon exposure to atmospheric moisture. The cured silicone remains flexible over the entire temperature range expected in pavement applications.

DOW CORNING® 890-SL Self-Leveling Silicone Joint Sealant is designed for use on asphalt and Portland Cement Concrete (PCC) applications. It is ideal material in the traffic control market for sealing saw-cut openings used to encapsulate and seal sensitized wiring loops for control of traffic signals, traffic counters, parking lot gates, ticket dispensers, and other similar equipment. It is also excellent for use in sealing light cans and electrical cable used in airport runway lighting.

PACKAGING:

29 fluid ounce cartridges, 4.5 gallon pails and 40 gallon drums.

COLOR:

Black.

DOW CORNING® 902 RCS Joint Sealant

- RAPID CURE SILICONE
- COLD APPLIED, EASY TO USE
- CONVENIENT DISPOSAL PAK
- HIGH MOVEMENT CAPABILITY

PRODUCT DESCRIPTION AND BASIC USES:

DOW CORNING® 902 RCS Joint Sealant is a self-leveling, cold applied, rapid-cure, two-part, easy to install, ultra-low modulus, 100% silicone rubber sealant designed to seal expansion joints that experience both thermal and/or vertical movements due to traffic loading. It can be used in new and remedial applications. It is especially well suited for maintenance work, such as bridge joint resealing, where resealing must be completed within a short period of time (less than 8 hours) to minimize traffic disruption.

DOW CORNING® 902 RCS Joint Sealant features include high movement capability. It will accommodate movements +100/-50% of joint size for joints 1 to 3 inches. It seals irregular surfaces, has good weatherability and is fully elastic. It has all-temperature gunnability and bonds to itself. Use on concrete and steel.

PACKAGING:

2 - 20 oz. E-Z Pak sausages.

COLOR:

Part A is black and Part B is white.

DOW CORNING® 983 Silicone Glazing & Curtainwall Adhesive/ Sealant

- 100% SILICONE, 2-PART NEUTRAL CURE SYSTEM
- STRUCTURAL CAPABILITY
- ±12.5% JOINT MOVEMENT
- HIGH MODULUS

PRODUCT DESCRIPTION AND BASIC USES:

DOW CORNING® 983 Silicone Glazing and Curtainwall Adhesive/Sealant is a two-part silicone formulation that cures to a high modulus elastomeric adhesive/sealant. It exhibits the following unique features: structural capability, excellent unprimed adhesion to most surfaces including glass, reflective coatings, metals and paints. It is consistently non-slump. Adjustable cure rate ranging from 15 to 60 minutes. Easy tooling.

DOW CORNING® 983 silicone glazing and curtainwall adhesive/sealant is designed for use in structural adhesive/sealant applications such as factory glazing and curtainwall production. Once cured, this adhesive forms a durable, flexible, watertight bond that will last.

PACKAGING:

Available in a kit. The kit consists of 42.2 gallons (500lbs) of base packaged in a lined, straight-sided drum, and 4.8 gallons (42 lbs.) of curing agent packaged in a metal pail.

COLOR:

Black.

DOW CORNING® 995 Silicone Structural Adhesive

- 100% SILICONE, 1-PART NEUTRAL CURE SYSTEM
- APPROVED FOR STRUCTURAL GLAZING
- ±50% JOINT MOVEMENT
- EXCELLENT ADHESION

PRODUCT DESCRIPTION AND BASIC USES:

DOW CORNING® 995 Silicone Structural Adhesive is a one-component, self-priming, shelf stable, neutral-cure, elastomeric adhesive designed for silicone structural glazing. DOW CORNING® 995 can be used for factory or field glazing. The adhesive exhibits the following unique features: excellent unprimed adhesion to most surfaces, including glass, reflective glass, anodized aluminum, granite and paints, including most Kynar* based paints. Once cured, this adhesive forms a durable, flexible, watertight bond.

TECHNICAL DATA: DOW CORNING® 995 MEETS OR EXCEEDS THE TEST REQUIREMENTS OF: FEDERAL SPECIFICATION TT-S001543A (COM-NBS) CLASS A FOR SILICONE BUILDING SEALANTS. FEDERAL SPECIFICATION TT-S-00230C (COM-NBS) CLASS A FOR ONE-COMPONENT BUILDING SEALANTS. ASTM SPECIFICATION C-920, TYPE S, GRADE NS, CLASS 25, USE NT, G, AND A.

PACKAGING:

Available in 10.3 ounce standard cartridges, 12 cartridges to the case, and 4.5 gallon pails for bulk use.

COLOR:

Black.

DOW CORNING® 999-A Building & Glazing Sealant

- 100% SILICONE, 1-PART ACETOXY CURE SYSTEM
- GENERAL GLAZING APPLICATIONS
- ±25% JOINT MOVEMENT
- USDA & FDA APPROVALS
- DESIGNED FOR BUTT GLAZING

PRODUCT DESCRIPTION AND BASIC USES:

DOW CORNING® 999-A Building & Glazing Sealant is an easily applied, one-part sealant that cures in the presence of atmospheric moisture to produce a durable and flexible wet glazing and curtainwall seal.



DOW CORNING® 999-A Building and Glazing Sealant is virtually unaffected by sunlight, rain, sleet, snow, ultraviolet radiation, ozone and temperature extremes. It will not become brittle, tear or crack; silicone sealant stays flexible indefinitely.

DOW CORNING® 999-A Building & Glazing Sealant is intended for building construction applications and is particularly effective for glazing butt and lap shear joints and sealing curtainwall projections and other glass, plastic, and metal assemblies. It is also appropriate for general construction applications.

It may be factory applied as a primary seal to glass, plastic and metal assemblies or as a secondary seal in insulating glass units.

TECHNICAL DATA: DOW CORNING® 999-A MEETS OR EXCEEDS THE TEST REQUIREMENTS OF: FEDERAL SPECIFICATION TT-S-001543A (COM-NBS) CLASS A FOR SILICONE BUILDING SEALANTS. FEDERAL SPECIFICATION TT-S-00230C (COM-NBS) CLASS A FOR ONE-COMPONENT BUILDING SEALANTS. ASTM SPECIFICATION C-920. CANADIAN SPECIFICATION CAN2-19.13-M82.

PACKAGING:

Available in 10.3 ounce standard cartridges, 12 cartridges to the case and 4.5 gallon pails for bulk use.

COLOR:

6 standard colors: clear, white, bronze, light bronze, black and aluminum. Custom colors are also available.

DOW CORNING® 1199 Silicone Glazing Sealant

- FAST CURE
- OUTSTANDING ADHESION
- 1-PART NEUTRAL CURE
- AAMA CERTIFIED

PRODUCT DESCRIPTION AND BASIC USES:

DOW CORNING® 1199 Silicone Glazing Sealant is a 1-part neutral cure RTV sealant specially formulated as a back bedding sealant for the high speed manufacturing of windows and doors. It is designed for aggressive adhesion to wood, vinyl, fiberglass, aluminum and glass. It is ideal for automated glazing systems, and can be used on sash, as well as cap, toe, or heel bead applications.

TECHNICAL DATA - APPROVALS/ SPECIFICATIONS: AAMA 802.3-92 (TYPE 1), 803.3-92(TYPE 1), 805.2-92, 808.3-92, TT-S-001543A CLASS A, TT-S-00230C CLASS A. ASTM C920, TYPE S, GRADE NS, CLASS 25 USE NT, G AND M.

PACKAGING:

Available in 10.3 ounce cartridges, 12 cartridges to the case, 4.5 gallon pails, and 48 gallon drums.

COLOR:

Clear, white, blue white, beige, bronze, gray, black, sand beige, forest green and light bronze. Custom matched colors are available.

DOW CORNING® General Purpose One- Part Silicone Sealant

- RESISTANT TO SUNLIGHT & WEATHER EXTREMES
- FAST CURE, HIGH STRENGTH ADHESION
- BONDS TO MANY COMMON SUBSTRATES

PRODUCT DESCRIPTION:

Dow Corning® General Purpose Silicone Sealant is a one-part, acetoxycure silicone sealant for general-purpose applications. It cures to 100% silicone rubber and provides a flexible bond that will not harden or crack. Dow Corning General Purpose Silicone Sealant is a high-performance sealant, with $\pm 25\%$ movement capability

when properly applied. Dow Corning General Purpose Silicone Sealant (clear and white) meet the requirements of FDA Regulation 21 CFR 177.2600. The product is supplied with removable, reusable, resealable nozzles that save time and sealant.

APPLICATIONS:

Use as a bedding material, as formed-in-place gasket, or formed-in-place bumper. Use for adhering trim, nameplates and signs. It is used for sealing around sinks, faucets, showers, tubs, toilets and vents. It is also used for most marine applications: sealing between hull and deck, most boat decks, windows, port lights, windshields and hatches.

COLOR:

Clear and White.

PACKAGING:

10.3 oz. Cartridge, with a 3-piece reusable, removable and resealable nozzle.

DOW CORNING® Glazing Sealant

- 100% SILICONE
- ACETOXY CURE
- PROFESSIONAL QUALITY
- ECONOMICAL

PRODUCT DESCRIPTION AND BASIC USES:

Trade Mate Glazing Sealant is a professional quality sealant specifically formulated to meet glass shop glazing needs. It forms a long-lasting, waterproof seal. It can be used in general glazing applications, backlite replacement and skylight installations. It may also be used to repair weatherstripping and gaskets. It's unique adhesion-promoted formulation ensures adhesion to many building substrates, and longer working time means a professional appearance for the finished job.

This one-part, acetoxycure silicone sealant offers excellent adhesion to most common building substrates and easy gunability. Trade Mate Glazing Sealant can be used on glass, plastics, metal, fiberglass, ceramics, aluminum, and repainted surfaces.

TECHNICAL DATA

TRADE MATE HAS BEEN CERTIFIED TO FEDERAL SPECIFICATION TT-S-001543A CLASS A FOR 1-COMPONENT BUILDING SEALANTS.

WHEN CURED IT MEETS ASTM-C920, TYPE S GRADE NS CLASS 25, USE NT, G, AND A.

PACKAGING:

Available in 10.3-ounce cartridges, 12 cartridges to the case.

COLOR:

White, black, aluminum, bronze, and clear.

DOW CORNING® Tub, Tile & Ceramic Sealant

- 100% SILICONE
- ACETOXY CURE
- ECONOMICAL

PRODUCT DESCRIPTION AND BASIC USES:

Trade Mate Tub, Tile & Ceramic Sealant is a one-part, ready to use, professional quality, mildew resistant sealant. This 100% acetoxycure product is specially formulated for use in shower and tub enclosures. It offers good looks and lasts a long time. It has excellent adhesion to shower/tub enclosures, ceramic tile, cultured marble, glass, most plastics and painted surfaces.

It is for high humidity and temperature extreme locations. It remains flexible and does not dry, shrink or crack. It has all temperature gunability and is dependable with long lasting performance. Trade Mate Tub, Tile & Ceramic Sealant waterproofs, resists deterioration by cleaning chemicals and cures rapidly.

PACKAGING:

Available in 10.3-ounce cartridges, 12 cartridges to the case.

COLOR:

Clear, white and almond.

DOW CORNING 123 Silicone Seal

- HIGH MOVEMENT
- EASILY APPLIED
- ALTERNATIVE TO CUTTING OUT
- FOR NEW & REMEDIAL

PRODUCT DESCRIPTION AND BASIC USES:

Dow Corning 123 Silicone Seal is a preformed, ultra-low modulus silicone extrusion that is bonded to substrates using Dow Corning 795 Silicone Building Sealant. It can be used in both new and remedial construction applications. It is easy to install and provides an economical, high-performance alternative to cutting out and recaulking existing failed weatherproofing sealants. It has a high movement and high-shear movement seal capable of handling specified live loads, wind sway and seismic movements. Dow Corning 123 can be used with Allguard to change the color and texture of a building.

It can be used in a variety of applications such as: a restoration joint on EIFS at both the EIFS to EIFS joints and window perimeter joints. An aluminum splice in high performance window and curtain-wall applications. For a flashing material or parapet or coping joint. Use as a transition seal.

PACKAGING:

Available in 100 foot rolls in widths of 1", 1 1/2", 2", 3", and 4". Custom sizes may be ordered.

COLORS:

White, gray, limestone, sandstone, bronze, and black. Also available in custom colors.

DOW CORNING® 1200 & 1205 Primers for Construction & Glazing Sealants

PRODUCT DESCRIPTION AND BASIC USES:

DOW CORNING® 1200 & 1205 Prime coats are used to promote adhesion of certain one-part, silicone sealants and coatings to a variety of construction materials such as plywood, masonry, metal, painted surfaces and some plastics.

TECHNICAL DATA: DOW CORNING® PUBLISHES TECHNICAL DATA INFORMATION ON THESE PRODUCTS WHICH ARE AVAILABLE FROM D.M. FIGLEY CO., INC.

PACKAGING:

Available in pint and gallon containers. Pints are packed 6 to the carton and gallons 4 per carton.

COLOR:

Both 1200 and 1205 are supplied in clear, and 1200 can be obtained in red.



DOW CORNING® P5200 Adhesion Promoter

- LOW VOC
- AVAILABLE IN CLEAR & RED
- FAST EVAPORATION TIME
- CLEANER & PRIMER FOR NON-POROUS SURFACES
- ADHESIVE TAPES CAN BE APPLIED TO PRIMED SURFACES

DESCRIPTION:

Dow Corning P5200 Adhesion Promoter is typically applied in a very thin layer to non-porous and porous construction finishes to increase the bonding capacity of Dow Corning silicone construction sealants and adhesives. The non-VOC solvent used in this product delivers the active ingredients in a thin, uniform coating that enhances surface cleaning, and in some cases, aids in the penetration of the active ingredients into the bonding surface. Sealant may be applied after primer has had time to dry (30 minutes in cold conditions, 10 minutes in warm conditions).

PACKAGING:

13-ounce can.

COLOR:

Red or clear.

DOW CORNING® PRIMER C Construction Sealant Primer

- NONSTAINING SILANE PRIMER FOR CONSTRUCTION APPLICATIONS
- MOISTURE CURE
- ACCELERATED ADHESION TO POLYVINYLIDENE FLUORIDE (PVF2)-OR KYNAR-BASED PAINTS
- ACCELERATED ADHESION TO POLYESTER POWDER PAINTS
- PRIMER FOR PLASTICS

DESCRIPTION:

Dow Corning® Primer C is a solvent based silane adhesion promoter for use in construction applications for plastic and painted surfaces.

Dow Corning Primer C has been shown to promote faster adhesion in low-temperature and low-humidity situations. Other benefits can be determined in actual field installation and application tests.

COLOR:

Clear and White.

PACKAGING:

10.3 oz. Cartridge, with a 3-piece reusable, removable and resealable nozzle.

DOW CORNING® PRIMER P Construction Sealant Primer

- PROMOTES ADHESION OF SILICONE SEALANTS TO MASONRY, STONE, CONCRETE & METAL SURFACES
- CONVENIENT 1-PART FORMULATION
- FILM-FORMING PRIMER RESISTS ADHESION DEGRADATION DUE TO WATER IMMERSION
- RESIN WILL NOT DISCOLOR WHEN EXPOSED TO SUNLIGHT

PRODUCT DESCRIPTION:

Dow Corning Construction Primer P is a one-component proprietary resin system designed to promote adhesion of silicone sealants to masonry surfaces. It imparts maximum water resistance to the bond in areas where residual water may be present, such as horizontal applications.

Dow Corning® Construction Primer P is suitable for use on substrates such as natural stone, masonry and glass fiber-reinforced concrete. Also suitable for metal substrates, such as Kynar® resin-painted aluminum, when properly prepared.

COLOR:

Clear.

PACKAGING:

15.5 oz. can.

DOW CORNING® Cleaner and Surface Prep Solvent

- CLEANS UNCURED SILICONES, RESIDUES, & OILS
- SOFTENS CURED SILICONES MAKES REMOVAL EASIER
- SAFE ON MOST SURFACES
- EVAPORATES COMPLETELY
- LOW TOXICITY, ODORLESS

DESCRIPTION:

Dow Corning Cleaner and Surface Prep Solvent is a volatile methylsiloxane (VMS) fluid developed specifically for use as a cleaning agent. Dow Corning Cleaner and Surface Prep Solvent is safe for use on a wide range of materials. Its mild cleaning action also makes it suitable for cleaning multimaterial components and devices.

Basic uses of Dow Corning Cleaner and Surface Prep Solvent can help meet environmental regulations in industrial operations. Typical applications include cleaning plastics, fiberglass and components; pre-cleaning surfaces prior to painting, sealing and bonding; degreasing bearings, nuts, bolts, chains and conveyor belts; and removing silicone pressure-sensitive adhesives.

PACKAGING:

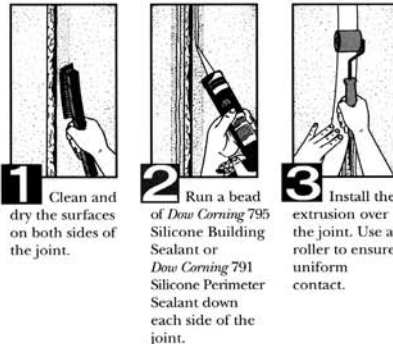
10-fl oz pressurized dispensers. Larger sizes special order only.

COLOR:

Clear.

New and improved Dow Corning® 123 Silicone Seal makes weatherseal repair as easy as

Dow Corning® 123 Silicone Seal is the **preformed** silicone extrusion that can be bonded to a wide variety of substrates with Dow Corning® 795 Silicone Building Sealant or Dow Corning® 791 Silicone Perimeter Sealant to form a durable, flexible and uniform weatherseal. Caulk removal is virtually eliminated, because the silicone seal *spans* the old weatherseal. Installation is fast and easy. And now Dow Corning 123 Silicone Seal is available in new matte and textured finishes and an expanded palette of standard colors. It can also be custom designed to your specifications to bend around and into corners and transitions without bunching or breaking. Dow Corning 123 Silicone Seal is perfect for dozens of weather-sealing applications, and it's ideal for use with Dow Corning® AllGuard Elastomeric Coating. The future of weatherseal repair is more versatile than ever. For more information, contact:



Dow Corning is a registered trademark of Dow Corning Corporation.
©1997 Dow Corning Corporation. All rights reserved.

DOW CORNING

EMSEAL COLORSEAL™

- A BINARY SEAL
- UV RESISTANCE
- REDUCES INSTALLATION
- SEAL INTEGRITY MAINTAINED
- MECHANICALLY ANCHORED BY BACK-PRESSURE
- SUPPLIED PRECOMPRESSED
- STANDARD SIZES FROM 1/4" TO 6"

DESCRIPTION:

COLORSEAL combines factory-applied low-modulus silicone, acrylic impregnated expanding foam sealant and closed-cell (EVA) foam into a unified binary sealant system. The expanding foam laminations are Emseal's GREYFLEX™ – open-cell polyurethane foam impregnated with a water-based, stabilized, polymer-modified acrylic. The silicone external and color weather facing is factory-applied to the foam while it is partially precompressed. The silicone is then cured and when finally compressed, a bellows is formed in the coating. The bellows virtually eliminates tensile stresses at the silicone/substrate interface. Puncturing of the silicone facing does not affect seal integrity (ASTM 1105-90).

COLORSEAL is supplied precompressed to less than the joint size. It is packaged in shrink-wrapped lengths called sticks, with a self-adhesive on one side. After insertion, it expands to fill and seal the joint. Sealing against the substrate is achieved through a combination of the pressure-sensitive adhesive impregnation, and 2.5 pounds of back-pressure per square inch of the expanding foam in conjunction with a field applied corner bead.

USES:

Facades: COLORSEAL is used in vertical and horizontal joints in building facades, soffits, etc., of precast concrete, brick, natural stone, metal and most other substrates.

EIFS: COLORSEAL is uniquely suited to properly sealing both new and retrofit expansion joints in Exterior Insulation and Finish Systems. These potentially weak substrates benefit from the minimal tension at joint interface; effects of air-pressure differential are reduced by virtue of COLORSEAL'S depth and density; elimination of the moisture-trap area commonly created between wet sealants and backer rods; it thermally insulates the EIFS cladding at joints.

COLOR & PACKAGING:

Eleven Standard Colors, sizes vary. Call for specifics.

FOMO PRODUCTS, INC. Handi-Foam® One-Component Foam

- FILLS CRACKS AND VOIDS
- SEALS AROUND HVAC
- FILLS GAPS AROUND PIPES
- FIXES SMALL HOLES

PRODUCT DESCRIPTION AND BASIC USES:

Handi-Foam® One-Component Foam is a UL-classified sealant. It can be used to economically insulate, seal, bond, fill and stop air infiltration. One-component foams cure when moisture in the air reacts with the chemistry of the foam. Handi-Foam® One-Component Foams cure to in place densities between 1.0 and 2.0 lbs. per cubic foot (16.02 to 32.04 kgs per cubic meter) and carry an R-value of 4 to 5 per inch (2.54cm). Cured foam can be trimmed, sanded and/or painted.

**TECHNICAL DATA: ASHRAE 90-75, ASTM E-84,
HUD/FHA MINIMUM PROPERTY STANDARD
FOR CAULKING AND SEALANT, UL CLASSIFIED
FILE # R13919.**

PACKAGING:

12 oz., 24 oz., 33 oz. lightweight cans. Additional cylinder sizes available.

COLOR:

Cream.



FOMO PRODUCTS, INC. Handi-Foam® Two-Component Foam

- INSULATING
- SEALS AROUND PIPES
- FILLS OPENINGS
- CONVERTING VANS & BUSES

PRODUCT DESCRIPTION AND BASIC USES:

Handi-Foam® Two-Component Foam is a chemically cured foam system. Two-component foam systems consist of an "A" side and a "B" side. These two components mix in the nozzle of the dispensing unit, and the resulting foam cures much more quickly than one-component foams. Handi-Foam® Two-Component Foams are available in a variety of densities, from 1.5 to 2.5 lbs. per cubic foot (24.03 to 40.04 kg per cubic meter). Handi-Foam® Two-Component Foams expands at a ratio of 8:1 and carries an R-Value of 6 to 7 per inch (2.54cm). Cured foam can be trimmed, sanded and/or painted.



**TECHNICAL DATA: ASTM E-162, ASTM E-84,
HUD/FHA MINIMUM PROPERTY STANDARD FOR
CAULKING AND SEALANT, AND MORE.**

YIELD:

12 board feet or 1 cubic foot.22 board feet or 1.83 cubic feet.

PACKAGING:

Consists of two canisters, dispensing system and two nozzles.

COLOR:

Cream.



GUNTHER Ultra/Bond™ Mirror Mastic

- MAXIMUM ADHESION
- STRONG & SAFE
- REMAINS FLEXIBLE
- QUALITY PROVEN

PRODUCT DESCRIPTION AND BASIC USES:

GUNTHER ultra/bond™ can bond between mirrors and drywall, wood, metals or dry painted surfaces. This is a proven formula for professional mirror installations. The material absorbs movement for the life of the application yet holds firmly.

GUNTHER ultra/bond™ will not cause de-silvering on electro copper plated baked enamel-backed glass mirrors. The product can compress to 1/32 of an inch, making it ideal for mirror installations requiring close tolerances such as mirrored furniture. Within 24 hours GUNTHER ultra/bond™ cures to 30% of maximum strength, 100% strength is achieved in twenty eight days at normal room temperatures.

**TECHNICAL DATA: GUNTHER CO PUBLISHES DATA
SHEETS ON THIS PRODUCT WHICH ARE AVAILABLE
FROM D.M. FIGLEY CO., INC.**

PACKAGING:

Available in standard 10.3 ounce tubes, 24 cartridges to the case and 1 gallon cans, 4 cans to the case.

COLOR:

Beige.

PAC/POLY ELASTO-THANE 230 Polyurethane Sealant

- 1-COMPONENT
- GUN-GRADE
- FOR USE WITH PAC/POLY DECK SYSTEMS

PRODUCT DESCRIPTION AND BASIC USES:

Elasto-Thane 230 is a one-part, self-leveling or gun-grade, non-staining polyurethane sealant which cures at ambient temperature to a firm, flexible tear-resistant rubber. It is highly resilient and has excellent recovery characteristics after extended period of compression or elongation. Use for sealing and caulking all joints that are subject to contraction and expansion. Elasto-Thane 230 bonds to concrete wood and metal.

TECHNICAL DATA: FEDERAL SPECIFICATION TT-S-230C, TYPE I AND TYPE II, CLASS A. ASTM C-920-87, TYPE S, CLASS 25, USE NT, M AND A.

PACKAGING:

11 oz. cartridges, 2-gallon and 5-gallon pails.

COLOR:

Concrete gray, aluminum gray, limestone, white, tan, black, beige, and off-white.

PAC/POLY POLYUREA 85A Joint Filler

- A 2-COMPONENT, 100% SOLIDS
- RAPID SETTING POLYUREA
- FOR SAW CUTS IN INDUSTRIAL AND WAREHOUSE FLOORS

PRODUCT DESCRIPTION AND BASIC USE:

PAC/POLY POLYUREA 85A is a rapid setting, 100% solids, flexible, two part polyurea joint filler. When cured, it is gray in color with an approximate Shore A Hardness of 85. It is designed to set rapidly and consistently in applications ranging from -40oF to 130oF. Can be reopened to traffic within 60 minutes.

PAC/POLY POLYUREA 85A is designed to fill and protect joints in industrial floors that are subject to traffic such as trucks, cars, forklifts or steel wheeled carts. It is also ideal for repair of spalled joints, filling random cracks and patching gouges, holes, and surface defects. PAC POLYUREA 85A is flexible, allowing limited movement, and protects the edges of concrete from spalling under heavy loading.

TYPICAL APPLICATIONS:

Industrial and Warehouse Floors, Cold Storage Facilities, Food Processing Facilities, Bottling and Canning Facilities. Polyurea Crack Sealer has adequate chemical resistance for applications in wastewater treatment facilities. PAC POLYUREA 85A is for interior use only. must be mixed using a static mixing tip. Do not hand mix.

PACKAGING:

10-gallon kits.
600CC Dual Paks (12 dual paks per case)

COLOR:

Gray (Custom colors can be made under minimum orders)

PAC/POLY ELASTO-SEAL 200 Jet Fuel-Jet Blast Resistant Joint Sealant

- THIOKOL®-BASED JOINT SEALANT
- FOR AIRFIELD RUNWAYS & PARKING APRONS
- NO PRIMERS NORMALLY REQUIRED

PRODUCT DESCRIPTION AND BASIC USES:

ELASTO-SEAL 200 is a two-part self-leveling jet fuel resistant polysulfide sealant which cures to a soft, flexible tear-resistant rubber. It is highly resilient and has excellent recovery characteristics after extended periods of compression or expansion.

ELASTO-SEAL 200 is a Thiokol®-based, coaltar modified joint sealant. For sealing joints on airfield runways, parking aprons and other areas where joints may be subject to fuel spillage and jet blast.

**TECHNICAL DATA
MEETS FEDERAL SPECIFICATION SS-S-200E.**

PACKAGING:

2-, 10- and 110-gallon kits.

COLOR:

Black.

PAC/POLY ELASTO-SEAL 227 Polysulfide Joint Sealant

- SELF-LEVELING OR GUN GRADE
- FOR TRAFFIC AREAS
- 2-PART THIOKOL®-BASED SEALANT

PRODUCT DESCRIPTION AND BASIC USES:

ELASTO-SEAL 227 is a two-part, self-leveling or gun-grade, polysulfide sealant based on Thiokol® which effectively seals joints which are subject to structural or thermal movement, as well as non-moving joints, against infiltration of water and dirt.

For use in sealing reservoirs, dams, canals, culverts, curtainwall panels, window panes and flashing. Also for all joint seal applications, such as expansion and contraction joints in shopping centers, sidewalks or other traffic areas. It will effectively prevent water from entering the sealed joints, particularly areas which are exposed to water, such as swimming pool decks and around planters.

**TECHNICAL DATA
MEETS FEDERAL SPECIFICATIONS TT-S-227E AND ALSO USAS SPECIFICATION A116.1-1967 CLASS A AND B, ASTM C-920 TYPE M, GRADE P, NS, CLASS 25.**

PACKAGING:

1.5-gallon and 4.5-gallon kits.

COLOR:

White, gray, tan and black.

PAC/POLY ELASTO-THANE 227

Polyurethane Joint Sealant

- SELF-LEVELING OR GUN GRADE
- 2-PART POLYURETHANE
- GOOD MOVEMENT CAPABILITY

PRODUCT DESCRIPTION AND BASIC USES:

ELASTO-THANE 227 is a two-part, self-leveling or gun-grade, non-staining, polyurethane sealant which cures to a firm, flexible tear-resistant rubber. It is highly resilient and has excellent recovery characteristics after extended periods of compression or elongation.

Use for sealing and caulking all joints that are subject to movement caused by expansion and contraction of structures with changes in temperature. It bonds to masonry, wood, glass and metal.

TECHNICAL DATA
FEDERAL SPECIFICATION TT-S-227E AND USASI
SPECIFICATION A116.1-1967. ASTM C-920
GRADE P & NS, CLASS 25, TYPE M.

PACKAGING:

1.5-gallon kits.

COLOR:

White, concrete gray, tan, aluminum gray, black limestone. Other colors are available on order.

PAC/POLY ELASTO-THANE 5639

Joint Sealant

- CALTRANS APPROVED
- 2-PART SELF-LEVELING MATERIAL
- BONDS TO CEMENT OR ASPHALT CONCRETE

PRODUCT DESCRIPTION AND BASIC USES:

ELASTO-THANE 5639 is a two-part, self-leveling jet-fuel-resistant polyurethane sealant which cures at ambient temperature to a soft, flexible, tear-resistant rubber. It is highly resilient and has excellent recovery characteristics after extended periods of compression or elongation. It bonds to portland cement or asphalt concrete.

Use for sealing and caulking all joints that are subject to movement caused by expansion and contraction of structures with changes in temperature. For sealing joints in bridges, airfield runways, parking aprons and other areas where joints may be subject to fuel spillage. Type H is suitable for hand mixing and Type M is for application with an automatic proportioning and mixing machine.

TECHNICAL DATA
FEDERAL SPECIFICATION SS-S-200D AND STATE OF
CALIFORNIA DIVISION OF HIGHWAYS 8030-61J-01.

PACKAGING:

5-gallon pails and 55-gallon drums.

COLOR:

Black.

SCHNEE MOREHEAD S-M 5430

Acryl-R® Non-Skinning, Non-Sag SSR Sealant

- NOT STRINGY OR MESSY TO APPLY
- USE FOR ACOUSTICAL APPLICATIONS
- WIDE TEMPERATURE RANGE
- SEAL BETWEEN DISSIMILAR METALS

PRODUCT DESCRIPTION:

S-M 5430 Acryl-R® is a non-skinning, non-drying sealant based on a unique elastomer that provides a non-stringy consistency and excellent resistance to severe environmental conditions of heat, cold and moisture. It has excellent cut-off characteristics and is not stringy or messy to apply. It has excellent adhesion to GALVALUME®, GALVALUME PLUS®, ACRYLUME®, ZINCALUME®, KYNAR 500®, sili-conized and polyvinyl fluoride painted metals. It has excellent webbing characteristics.

TYPICAL USES:

S-M 5430 is designed for factory sealing the female lip of a concealed standing seam roof (SSR) rib, as well as wall panels and polyurethane foam panel joints where a positive seal is required in mechanically fixed joints. Specifically formulated for precise application into concealed panel joints for roll forming lines. Excellent for factory sealing standing seam roof panels and end laps. Excellent for sealing between dissimilar metals to prevent electrolysis. Excellent for use as an acoustical sealant. Excellent surface wetting over a wide temperature. Excellent for sealing base plates to concrete slabs before anchoring.

FEDERAL SPECIFICATIONS:

Meets TT-C-1796A, Type 1, Class A.
 AAMA 809.2, USDA Acceptable.

PACKAGING:

10.3-oz Cartridges, 30/case.
 30-oz. cartridges, 12 cartridges per case.

COLOR:

Off white.

SCHNEE MOREHEAD S-M 5504/5505

Narrow-Joint Sealants

- SINGLE COMPONENT, NO MIXING
- EXCELLENT WEATHERABILITY
- STANDARD FOR ALUMINUM WINDOW MANUFACTURERS

PRODUCT DESCRIPTION AND BASIC USES:

Narrow-Joint Sealants No. 5504/5505 are one-component sealant designed to seal mechanically fixed joints. They are designed to seal corner joints, mechanical fasteners, flashing joints, screw heads and hidden wall-system joints.

The self-leveling compound S-M 5504, is dispensed through Plews applicators and the non-sag compound, S-M 5505 is supplied in cartridges.

COVERAGE:

1/16" diameter bead	6,260 feet per gallon
1/8" diameter bead	1,565 feet per gallon
3/16" diameter bead	695 feet per gallon

TECHNICAL DATA: S-M 5504 MEETS THE TEST REQUIREMENTS OF AAMA SPECIFICATION 803.3-85
REFERENCE STANDARDS: ANSI/AAMA 101-85 AND 1002.10-83.S-M 5505 DATA SHEETS ARE AVAILABLE FROM D.M. FIGLEY CO., INC.

PACKAGING:

Available in 10.3 ounce cartridges, 30 cartridges to the case, pint cans and 5 gallon pails.

COLOR:

Aluminum, black, bronze, beige, white and clear.

SCHNEE MOREHEAD S-M 5522 Acryl-R® Acrylic Sealant

- 1-PART
- RESISTS UV ATTACK
- REMAINS DUCTILE

PRODUCT DESCRIPTION AND BASIC USES:

S-M 5522 is a one-part sealant that is compounded from acrylic polymers. Tests indicate, that S-M 5522 exhibits extreme stability in the presence of ultraviolet radiation, atmospheric contamination and infrared radiation. S-M 5522 remains ductile throughout the practical life of the assembly to which it is applied.

COVERAGE:

1/8 inch diameter bead	1,565 feet per gallon
3/16 inch diameter bead	695 feet per gallon
1/4 inch diameter bead	392 feet per gallon

**TECHNICAL DATA: S-M 5522 MEETS AND EXCEEDS
AAMA SPECIFICATION 802.3-85. REFERENCE
STANDARDS: ANSI/AAMA 101-85 ;AND 1002.10-83.**

PACKAGING:

Available in 10.3 cartridges packed 30 cartridges per case. It is also available in 5 gallon pails and 50 gallon drums on special order.

COLOR:

Beige, black, clear, gray and white.

SCHNEE MOREHEAD S-M 7100 Permathane® Polyurethane Sealant

- ECONOMICAL POLYURETHANE
- ONE-COMPONENT SEALANT
- PAINTABLE
- EXCELLENT ADHESION TO MOST SUBSTRATES

PRODUCT DESCRIPTION AND BASIC USES:

S-M 7100 Sealant is a one component, balanced modulus, moisture curing, non-sag, gun grade elastomeric sealant. It is designed to seal various construction/fabrication details that are subject to structural movement. After cure, S-M 7100 is a flexible, resilient rubber. S-M 7100 sealant is designed for sealing expansion and control joints, precast concrete panel joints, perimeter caulk joints, copings, steps, risers and tilt-wall joints and between construction materials of dissimilar expansion coefficients.

S-M 7100 sealant may be factory or field applied to seal various construction components. No primer is required except on masonry subjected to continuous immersion. Some substrate surfaces may require special cleaning or treatment. It is recommended to pretest adhesion.

**TECHNICAL DATA: TT-S-00230 C (TYPE II) CLASS A,
NON-SAG, ONE-COMPONENT, ASTM C-920 TYPE S,
GRADE NS, CLASS 25, USE-NT, USE-A, USE-M, USE-G,
USE-O, AAMA 808.3-92 (EXTERIOR PERIMETER
SEALING COMPOUND).**

PACKAGING:

Available in 10.3 cartridges, 30 cartridges to a case.

COLOR:

Black, bronze, gray, white, limestone, almond.

SCHNEE MOREHEAD S-M 8500 Acryl-R® Elastomeric Sealant

- HIGH ADHESION
- USDA APPROVED
- WATER CLEAN-UP

PRODUCT DESCRIPTION AND BASIC USES:

S-M 8500 Elastomeric Sealant is a high performance sealant designed for exterior and interior building construction details. It is a single component, non-sag sealant able to withstand 50% total joint movement. This elastomeric construction sealant is USDA approved for use in establishments operating under the Federal Meat and Poultry Inspection Program. It is formulated from a high molecular weight acrylic latex polymer. It is non-flammable and has a very low V.O.C. This non-stringing product is easily tooled. Excess material can be removed with a water dampened cloth before cure.

S-M 8500 can be used to seal window and door perimeters, construction joints, O.E.M. fabrications, brick, masonry, transportation assemblies, log homes, and toilet fixtures. It is an ideal institutional maintenance sealant.

**TECHNICAL DATA: FEDERAL SPECIFICATION
TT-S-00230C (COM-NBS) CLASS A NON-SAG,
ONE COMPONENT* CIDA-A-272, TYPE II ASTM C-920,
TYPE S, GRADE NS, CLASS 25* AAMA 802 3-92,
AAMA 808.3 ASTM C-834.**

PACKAGING:

Available in 10.3 cartridges, 30 cartridges to a case.

COLOR:

White and clear.

SHEETROCK® BRAND Acoustical Sealant

- PERMANENTLY FLEXIBLE
- HIGH ADHESION
- PAINTABLE & NONSTAINING
- EASY WATER CLEAN UP
- USE IN FIRE-RATED PARTITIONS FOR SOUND CONTROL

PRODUCT DESCRIPTION:

Partition sound ratings can match the promise of sound tests – but only when field-construction gaps are properly sealed. Fortunately, this is easy and economical to do with SHEETROCK® Brand Acoustical Sealant. It sound-seals partitions at gaps and electrical box cutouts which are devastating to sound ratings. Use it to seal all abutting dissimilar materials on both sides of partitions.

SHEETROCK® Brand Acoustical Sealant is a highly elastic water-based sealant for reducing sound transmission in partition systems to achieve specified STC/MTC values. Seals spaces at perimeters of partitions or around cutouts. Surface dries to a tough film but sealant remains flexible to form a long-lasting resilient acoustical seal. It is non-staining, and can be painted if required. It has many interior acoustical uses. Easily applied on vertical and horizontal surfaces without sagging even overhead.

Paint ability: 2 hrs. (latex-based paint); 24 hrs. (oil-based paint).

COLOR:

Off-white.

PACKAGING:

29 oz. Cartridge.
5 gal. pail.

Sikadur® Combiflex Strip and Seal System

- EXCEPTIONAL ADHESION ON ALL COMMON BUILDING MATERIALS
- EASY APPLICATION
- EASY REPAIR
- ECONOMICAL SOLUTION

PRODUCT DESCRIPTION AND BASIC USES:

Versatile sealing system for problem and difficult joints and cracks. Withstands extreme movements and chemical exposures while maintaining a watertight seal. The system consists of Sikadur® 31, Hi-Mod Gel, epoxy adhesive, and Combiflex perforated Hypalon sealing strip.

Sikadur® Combiflex can be used in construction, expansion cracks, and connecting joints. Use on concrete, mortar, steel, iron, aluminum, brick, wood, and other building materials. Use it on tunnels, pipes, storage tanks, swimming pools, parking garages, sewage treatment tanks and roofs.

COVERAGE:

Hypalon Sheeting- 20 Lineal ft./roll
Sikadur® 31, Hi-Mod Gel- 40 Lineal ft./gal.
Combiflex Activator- 20 Lineal ft./pt.

PACKAGING:

Kits: Pre-measured containing 4 in. wide by 20 ft. long Hypalon sheeting, 60 oz. of Sikadur® 31, Hi-Mod Gel and 1 pt. of Combiflex Activator.

COLOR:

Sikadur® 31 Hi-Mod Gel Adhesive is concrete gray and Hypalon sheeting is concrete gray.

Sikaflex® - 1 a Elastomeric Sealant/Adhesive

- 1-PART POLYURETHANE SEALANT
- EXCELLENT PERFORMANCE IN ALL MOVING JOINTS
- EXCELLENT ADHESION WITHOUT PRIMER IN MOST CASES
- PAINTABLE WITH WATER, OIL, AND RUBBER BASE PAINTS
- USDA APPROVED, ODORLESS, NON-STAINING
- EPA APPROVED FOR POTABLE WATER, SUITABLE FOR CONTINUOUS IMMERSION

PRODUCT DESCRIPTION AND BASIC USES:

Sikaflex®-1a is a premium-grade, high-performance, moisture-cured, one-component, polyurethane-base, non-sag elastomeric sealant. It resists dilute acids, alkalines, jet fuel, water and residential sewage.

Sikaflex®-1a is an excellent general-purpose sealant designed for all types of joints where maximum depth of sealant will not exceed 1/2 inch. Suitable for all expansion and contraction joints for waterproofing frames, fillets, flashing, facades, curtain walls, retaining walls, and pipe conduits. Excellent for use with concrete, wood, glass, steel, aluminum, copper, ceramic materials, brick, polyester, epoxy and most other substrates.

Sikaflex®-1a can be used as a toe or heel bead in glazing and it is compatible with preformed tapes and bedding compounds utilized in glazing.

TECHNICAL DATA - MEETS FEDERAL SPECIFICATION TT-S-00230C, TYPE II, CLASS A. MEETS ASTM C-920, TYPE S, GRADE NS, CLASS 25, (USE NT, M, A AND O). MEETS CANADIAN STANDARD 19-GP-16A, TYPE II.

PACKAGING:

Available in 10.3 fluid ounce cartridges, 24 to the case, and 20.0 fluid ounce Unipacs, 20 to the case.

COLOR:

Aluminum gray, black, capitol tan, colonial white, dark bronze, limestone, and white.



Sikaflex® - 1 CSL 1-Part Self-Leveling, Polyurethane Urethane Sealant

- SELF-LEVELING, POURABLE
- PERMANENTLY ELASTIC
- EXCELLENT ADHESION
- ACCELERATED CURING

PRODUCT DESCRIPTION AND BASIC USES:

Sikaflex®-1CSL is a single component, self-leveling, premium grade polyurethane sealant with an accelerated curing capacity.

This premium grade polyurethane sealant is engineered for horizontal expansion and construction joints, such as concrete pavements, cementitious slabs, epoxy coated floors, balconies, roadways, and runways. The easily disposed of Unipac sausage can be used to pour into the joint when needed.

TECHNICAL DATA: SIKAFLEX® 1CSL MEETS FEDERAL SPECIFICATION TTS-S-00230C, TYPE 1, CLASS A. MEETS ASTM C-920, TYPE S, GRADE P, CLASS 25

PACKAGING:

Available in disposable 20 ounce Unipac.

COLOR:

Limestone.

Sikaflex®-15LM Low-Modulus Elastomeric Sealant

- 1-PART POLYURETHANE SEALANT
- OUTSTANDING PERFORMANCE IN HIGH MOVEMENT JOINTS
- PLUS 100% MINUS 50% JOINT MOVEMENT
- EXCELLENT ADHESION – WITH NO PRIMER IN MOST CASES
- PAINTABLE WITH WATER, OIL AND RUBBER BASED PAINTS
- SUITABLE FOR CONTINUOUS IMMERSION IN WATER

PRODUCT DESCRIPTION AND BASIC USES:

Sikaflex®-15LM is a one-component, moisture-cured, non-sag, permanently flexible polyurethane sealant that is self-priming with most construction materials. It resists attack from dilute acids and alkalines, jet fuel, water, and residential sewage. Curing to a flexible consistency with exceptional cut-and-tear-resistance, Sikaflex®-15LM offers superior performance when used to seal concrete, wood, glass, steel, aluminum, copper, ceramic materials, brick, cement, polyester, and epoxy.



Sikaflex®-15LM is designed for all expansion and contraction joints. Waterproofing frames, fillets, flashing, facades, curtain walls, retaining walls, pipe conduits, and other applications.

TECHNICAL DATA: SIKAFLEX® 15LM-MEETS FEDERAL SPECIFICATION TT-S-00230C, TYPE II, CLASS A. MEETS ASTM C-920, TYPE S, GRADE NS, CLASS 25. MEETS THE FEDERAL SPECIFICATION FOR SILICONES - TT-S-001543 A, TYPE II NON-SAG.

PACKAGING:

Available in 10.3 fluid ounce cartridges, 24 to the case, and 20 fluid ounce Unipacs, 20 to the case.

COLOR:

Aluminum gray, black, capitol tan, colonial white, dark bronze, limestone, white, coping stone, red-wood tan, hartford green, almond, off white, beige and aluminum stone

Sikaflex®-11FC Elastomeric Sealant/Adhesive

- FAST CURE SEALANT
- EXCELLENT ADHESION
- NON-CORROSIVE
- PAINTABLE MATERIAL
- USE AS AN ADHESIVE

PRODUCT DESCRIPTION AND BASIC USES:

Sikaflex®-111FC is a one component, gun grade, adhesive and sealing compound of permanent elasticity. This dual purpose material is based on a special moisture-cured polyurethane with an accelerated cure time. As an elastic adhesive used for: cover plates, gaskets, acoustical ceiling tiles, floor moldings and sills, roof materials and wood, metal or plastic window, around door frames. Also used as an elastic joint sealer use for: air ducts, containers, aluminum fabrication, and bolted lap joints. Sikaflex®-111FC is highly durable.

**TECHNICAL DATA: TT-S-00230C, ASTM C719
ASTM D-2240, ASTM D-412, ASTM D-1002**

PACKAGING:

Available in 10.3 ounce cartridges, 12 cartridges to the case.

COLOR:

White.

SIKAFLEX® AT-Connection The Universal Construction Sealant For Window, Door Perimeter & Connection Joints

- SUPERIOR ADHESION TO VINYL/PVC
- MOVEMENT CAPABILITY $\pm 25\%$
- SILICONE-FREE AND PAINTABLE
- EXCELLENT PRIMERLESS ADHESION
- NON-YELLOWING
- ODORLESS AND SOLVENT-FREE

PRODUCT DESCRIPTION:

Sikaflex AT-Connection is a 1-part, moisture-curing elastic sealant based on a proprietary Hybrid Polyurethane technology. Ideal for window and door connection and perimeter joints between porous and non-porous substrates. Sikaflex AT-Connection is odorless and solvent-free, suitable for both interior and exterior use. Uses for Sikaflex AT-Connection are requirements for all kinds of connection joints, window and door perimeter joints, facade and metal cladding joints applications as well as construction and expansion joints. Ideal sealant for vinyl windows, doors and fiber cement board (FCB).

FEDERAL SPECIFICATIONS:

Meets ASTM C-920, Type S, Grade NS, Class 25, use NT, G, A & M.

PACKAGING:

10.3 oz cartridges, 12 pc/box.

COLOR:

White.

Sikaflex® 2c NS/SL Polyurethane Elastomeric Sealant



- 2-PART SYSTEM ASSURES CURING IN LARGE JOINTS
- EXCEPTIONAL ADHESION TO MOST MATERIALS WITHOUT PRIMING
- ±50% JOINT MOVEMENT
- APPROVED FOR EIFS SYSTEMS
- PRE-PIGMENTED LIMESTONE OR WIDE VARIETY OF COLORS AVAILABLE
- TOUGH, DURABLE, FLEXIBLE CONSISTENCY
- EPA APPROVED FOR POTABLE WATER, SUITABLE FOR CONTINUOUS IMMERSION

PRODUCT DESCRIPTION AND BASIC USES:

Sikaflex®-2c NS/SL is a two-component, premium-grade, high performance, elastomeric polyurethane joint sealant. A chemical cure in a non-sag and self-leveling consistency, available in a variety of colors utilizing the convenient SIKA Color-Pak. Curing to a permanently flexible consistency, with exceptional cut-and-tear resistance, Sikaflex®-2c is self-priming with most construction materials. It resists attack from dilute acids and alkalines, jet fuel, water, and residential sewage.

Sikaflex®-2c NS/SL is capable of 50% joint movement and is designed for all expansion and contraction joints, offering superior performance when used with concrete, wood, glass, steel, aluminum, copper, ceramics, brick, cement, polyester, and epoxy.

Sikaflex®-2c NS/SL can be used in a wide range of projects including buildings, parking garages, water treatment plants, canals, bridges and similar structures. Sikaflex®-2c NS/SL can withstand continuous water immersion.

TECHNICAL DATA: SIKAFLEX® 2C N/S & S/L MEETS FEDERAL SPECIFICATION TT-S-00227E, TYPES I AND II, CLASS A, ASTM C-920, TYPE M, GRADE P, CLASS 25, GRADE P NS. ASTM C-920, TYPE M, GRADE NS CLASS 25.

PACKAGING:

Available in packaging is 1.5 gallon unit.

COLOR:

Color-Paks are offered in a wide range of architectural colors. Consult the Sika color chart for details. Custom colors are also available upon request.

Sikaflex® 2c NS/TG Traffic Grade

- SLOPE GRADE MATERIAL
- ±25% JOINT MOVEMENT
- EXCELLENT ADHESION
- 2-COMPONENT SEALANT

PRODUCT DESCRIPTION AND BASIC USES:

Sikaflex® 2C NS/TG is a premium grade, polyurethane-based elastomeric sealant. It is available in 40 standard colors with a convenient color-pak. It is also available in pre-pigmented limestone gray.

Use on parking garages, walkways, plazas, platforms with exposure to foot or pneumatic tire traffic. It is intended for horizontal joints with a minimum depth of 1/4". Sikaflex® 2C NS/TG is a tough, durable, flexible material with exceptional cut and tear resistance. It is fuel resistant as well. The chemical cure allows the sealant to be placed in joints exceeding 1/2" in depth.

TECHNICAL DATA: MEETS ASTM C920 AND FEDERAL SPECIFICATION TT-S-00227E.

COVERAGE:

1 unit yields 231 cu. in. or 154 lineal ft. of a 1/2" x 1/4" joint.

PACKAGING:

1.5 gallon unit, plus 1/2 pint can of Sikaflex 2C NS TG component. (6 - 1/2 pint cans/case)

COLOR:

Limestone gray available in pre-pigmented. 40 standard colors, special and custom colors available upon request.

Sikaflex®-201 Industrial Polyurethane Sealant

- EXCELLENT ADHESION TO A WIDE RANGE OF SUBSTRATES
- EPA APPROVED FOR POTABLE WATER
- USDA AND FDA APPROVED

PRODUCT DESCRIPTIONS AND USES:

Sikaflex®-201 is a one-part, polyurethane-based, flexible sealant. The material cures to a tough, durable, elastic consistency with excellent cut-and-tear resistance. Can be painted over with water, oil, and rubber-based paints. Sikaflex®-201 adheres, in most cases, without a primer, to aluminum siliconized, polyester-painted metals, and other metals, glass, wood, tiles, fiber-reinforced plastics. Exhibits tenacious adhesion to aluminum, FRP, steel, oily GALVALUME*, ZINCALUME*, Zincgrip*, and aluminized steel without attacking the metal coating.

Sikaflex®-201 is used to waterproof lap seams in trucks, trailers, and RVs. Sealing and caulking exterior lap joints of grain storage bins, and sealing the base to the concrete pad. Sealing and caulking exterior joints around roof curbs, roof joints, skylights, smoke vents, air conditioning equipment, curtain wall joints. Sealing of exposed and concealed joints of aluminum, steel, coated metals, wood, roof rails, and door hinges in transport equipment.

TECHNICAL DATA: SIKAFLEX® 201 MEETS FEDERAL SPECIFICATION TT-S-00230C, TYPE II, CLASS A. CAPABLE OF MOVING - +25%. MEETS FDA REGULATIONS

PACKAGING:

Available in 10.3 ounce standard cartridges, 12 cartridges to the case.

COLOR:

White, black, aluminum gray.

Sikaflex®-221 Industrial Polyurethane Adhesive Sealant

- EXCELLENT ADHESION TO A WIDE RANGE OF SUBSTRATES
- FAST CURE
- EPA APPROVED FOR POTABLE WATER. USDA AND FDA APPROVED

PRODUCT DESCRIPTION AND BASIC USES:

Sikaflex®-221 is a one-component, fast-cure, flexible, polyurethane-based, elastomeric, adhesive/sealant. It is a moisture-cured non-sag system. Sikaflex®-221 adheres to a wide range of substrates, without primer in many cases. It exhibits tenacious adhesion to aluminum, FRP, steel, oily GALVALUME*, ZINCALUME*, Zincgrip* and aluminized steel without attacking the metal coating. The material is odorless, non-staining and can be painted.

Sikaflex®-221 is used for bonding, sealing, and caulking in repair, and construction of joints for materials like prepainted metals, glass, aluminum, SMC, RIM, FRP, and other plastics and composites. In automotive, van and truck bodies and cab construction including panels, underbody components, and roofing. Front and rear spoilers, auto trim, moldings, body seams, and welded joints.

In railcars, buses, trailers, and RVs the material is used for lap seams and moldings, floor bonding, butt joints, floor plates, sealing around window and door openings, underside joints, door hinges, air conditioners and portholes.

For container construction and repair it will bond rubber door gasketing and profiles as well as seal and cover rivet/fastener heads.

Sikaflex®-221 is used in the metal roof construction industry for endlaps, exterior joints, roof joints, smoke vents, skylights, and sealing the bin base to the concrete pad.

TECHNICAL DATA: SIKAFLEX® 221 MEETS FHSLA REGULATIONS. MEETS FDA REGULATIONS

PACKAGING:

Available in 10.3 ounce standard cartridges, 12 cartridges to the case.

COLOR:

White, black, aluminum gray, and colonial white.



Sikaflex®-252 Polyurethane Elastic Adhesive

- ONE COMPONENT
- SANDABLE & PAINTABLE
- HIGH STRENGTH
- SHORT TACK FREE TIME
- GAP FILLING

PRODUCT DESCRIPTION AND BASIC USES:

Sikaflex®-252 is a polyurethane based material which cures on exposure to the air. Sikaflex®-252 bonds and seals in the same application. It can replace rivets and mechanical fasteners in some applications and has a short tack free and curing time. The product has adhesion to a wide range of substrates.

Sikaflex®-252 is widely used in the manufacture of trucks, trailer and equipment to bond floors (plywood, blandex, wood, and metal) to subfloor or metallic frames. It is also utilized for bonding exterior or interior panels, walls, and sheets, to corners or tubular frames. Another application is to bond FRP roofs (vans, cabins), sandwich panels and walls, and the bonding of trims, molding and all kinds of styling elements.

PACKAGING:

Available in 10.3 fluid ounce cartridges packed 12 cartridges to the case.

COLOR:

Black and white.

Sikaflex® Primers 260/205, 429/202 449/203 and 35

PRODUCT DESCRIPTIONS AND USES:

PRIMER 260/205 — is a dual-purpose, clear, virtually colorless coating. Use it for promoting adhesion of urethane sealants to various metallic, non-metallic, and plastic substrates.

PRIMER 429/202 — promotes adhesion to clean, sound, dry concrete, masonry and woods, including teak and mahogany, prior to placing Sikaflex sealants.

PRIMER 449/203 — is used to promote adhesion to PVC, solvent-based enamel, PPG's fluorocarbon Duranar-finish and certain plastics such as ABS and Plexiglas.

NOTE: Most substrates require a primer only if testing shows the need for it. Certain substrates do require a primer under all conditions, such as sealant that will be underwater after cure.

COVERAGE:

One pint will prime the following average lineal feet, for a 1/2 x 1/2 inch joint, depending on porosity of substrate:

260/205	300-500
429/202	300
449/203	300-500
35	300

PACKAGING:

Sikaflex® 260/205 & 449/203 are available in pints, 6 pints to the carton. 429/202 is available in pints, 6 pints to the carton and 1-gallon cans, 4 cans to the carton.

COLOR:

Clear.

Sika-Primer 206 G+P

DESCRIPTION & USES FOR 206J PRIMER:

Sika-Primer 206 G+P is a one-component primer for use on glass and metals to improve adhesion of Sikaflex Adhesives and Sealants. Use as a primer on metal and glass to insure bond between adhesive and substrate. Use as a black out primer when no frit is supplied on glass.

PACKAGING:

Available in 1 pint cans, 6 cans to the carton.

COLOR:

Black.

Sika-Primer 210T

DESCRIPTION & USES FOR 210T PRIMER:

Sika-Primer 210T is a one-component fast drying primer for use on FRP, ABS, plastics, aluminum, steel, polyurethane and various paints, lacquers and varnishes.

PACKAGING:

Available in 250 ml. bottles, 6 bottles to the carton.

COLOR:

Slightly yellowish.

www.dmfigley.com

Come visit us at our website. We have manufacturer's links, our "Special of the Month" from the Figley Direct Mailers and a "What's New" area.

We have coating guides, current events and training seminars posted. Check out our photo section of customers and projects.

We have many items that can be downloaded such as credit applications, line cards and more. Sign up for your own log-on to request information or place an order.

We want you to use this site as an extension of our service. D.M. Figley Company representatives are always available to help our customers on-site, via the telephone or by the web.

Our customers come first!

SONOLASTIC® 150 WITH VLM TECHNOLOGY Very Low-Modulus, Fast-Curing, Non-Sag, Elastomeric, Silyl- Terminated Polyether Sealant For EIFS

- HIGH FLEXIBILITY
- VERY LOW MODULUS
- WEATHER RESISTANT
- NONSTAINING
- MILDEW RESISTANT

DESCRIPTION:

Sonolastic® 150 with VLM Technology is a premium, very low-modulus, high movement, nonsag, fast-curing, ready-to-use, silyl-terminated polyether sealant. It combines the best qualities of organic and silicone sealants. It accommodates extreme joint movement (+100 to -50%) to keep moving joints weatheright.

COMPLIANCES:

- ASTM C 920, Type S, Grade NS, Class 100/50, Use NT, M, A, G, and O
- Federal Specification TT-S-001543A, Type II, Class A, Type Nonsag
- Federal Specification TT-S-00230C, Type II, Class A
- Corps of Engineers CRD-C-541, Type II, Class A
- USDA compliant for use in areas that handle meat and poultry
- ASTM C 1382 for use with EIFS wall systems

COLOR:

White, off-white, cameo, salt box, limestone, river-bend, tan, stone, aluminum gray, redwood tan, medium bronze, special bronze, and black.

PACKAGING:

10.1 fl oz cartridges 30 per case.
20 oz ProPaks, 20 per case.

X.J.S.® Expansion Joint System for Bridge and Parking Decks

- EASY TO INSTALL
- RAPID CURE TIME
- HIGH MOVEMENT CAPABILITY

PRODUCT DESCRIPTION AND BASIC USES:

The X.J.S.® Expansion Joint System combines a tough wear-resistant polymer for expansion joint nosing and rapid-curing, high movement silicone for joint sealing. The system is cold applied, and provides a watertight, chemical resistant seal to accommodate high traffic loads and remain pliable in cold and warm temperatures. The silicone sealant in the system will bond to itself making it ideal for maintenance applications. The rapid curing ability of the X.J.S.® makes it an excellent choice for highways, bridges, airfields, parking decks and other high volume areas that require short closure times.

The System Components are: Silspec® 900 Polymer Nosing System, a two-part liquid polymer. It cures to a dense semiflexible polymer that is resistant to chemicals, weather, abrasion and impact. Then the Dow Corning® 902 RCS Joint Sealant is a 2-part, 100% Silicone rubber sealant. It is self-leveling and can conform to irregular joints. The system is an excellent choice for repairs on "T" joints, asphalt overlays and strip seals.

TECHNICAL DATA

RAPID CURE, SILICONE JOINT SEALANT. MIL S8802, ASTM D1475, ASTM D3583.

POLYMER NOSING SYSTEM- BINDER- ASTM D2393, AAASHTO M-200, ASTM D638, ASTM D2240.

POLYMER NOSING SYSTEM- MORTAR- ASTM C579, ASTM C882, ASTM C501.